

# HALLELUJAH

WORDS & MUSIC BY LEONARD COHEN

Arranged by Jonathan Wikeley

SOPRANO *pp*  
Ooh, \_\_\_\_\_ ooh, \_\_\_\_\_

ALTO *pp*  
Ooh, \_\_\_\_\_ ooh, \_\_\_\_\_

TENOR *pp*  
Ooh, \_\_\_\_\_ ooh, \_\_\_\_\_

BASS *p*  
I've heard there was a se-cret chord that Da - vid played and it pleased the Lord, but

PIANO

5  
ooh. \_\_\_\_\_ It goes like this, the fourth, the fifth, the

ooh. \_\_\_\_\_ Ooh, \_\_\_\_\_ ooh, \_\_\_\_\_

ooh. \_\_\_\_\_ Ooh, \_\_\_\_\_ ooh, \_\_\_\_\_

you don't real-ly care for mu - sic do you? \_\_\_\_\_ Ooh, \_\_\_\_\_

PIANO

*dim.*

mi-nor chord, the ma-jor lift, the baf-fled king com-pos-ing Hal-le-lu-jah. Ooh,

ooh. Hal-le-

ooh. Ooh,

ooh. ooh. Ooh,



ooh, Hal-le-lu - - -

*p* -lu-jah, Hal-le-lu-jah, Hal-le-lu-jah, ooh. *dim.*

ooh. ooh.

ooh. ooh.



25

-jah.

or TB unison  
*mp*

Your faith was strong but you

*mp*

30

need-ed proof, you saw her bath - ing on the roof, her beau - ty and the moon - light o - ver -

threw you. \_\_\_\_\_ She tied you to a kit-chen chair, she broke your throne and she

*cresc.*

*cresc.*

Detailed description: This block contains the musical notation for measures 35 through 39. It features a vocal line and a piano accompaniment. The vocal line begins with a rest in measure 35, followed by the lyrics 'threw you.' in measure 36, and 'She tied you to a kit-chen chair, she broke your throne and she' in measures 37-39. The piano accompaniment consists of a steady eighth-note pattern in the right hand and a bass line in the left hand. A yellow highlight covers the vocal line from measure 36 to the end of the system. The word 'cresc.' appears above the vocal line in measure 38 and below the piano line in measure 39.

cut your hair, and from your lips she drew the Hal - le - lu - jah. \_\_\_\_\_ Hal - le -

*dim.*

*dim.*

Detailed description: This block contains the musical notation for measures 40 through 44. It features a vocal line and a piano accompaniment. The vocal line begins with the lyrics 'cut your hair, and from your lips she drew the Hal - le - lu - jah.' in measure 40, followed by a rest in measure 41, and 'Hal - le -' in measure 42. The piano accompaniment continues with the same eighth-note pattern. A yellow highlight covers the vocal line from measure 40 to the end of the system. The word 'dim.' appears above the vocal line in measure 42 and below the piano line in measure 44.

45

lu - jah, \_\_\_\_\_ Hal - le - lu - jah, \_\_\_\_\_ Hal - le - lu - jah, \_\_\_\_\_

50

\_\_\_\_\_ Hal - le - lu - - - - jah.

*mf*

Ba - by, I've been here be - fore, - I've seen this room and I've

*mf*

Ba - by, I've been here be - fore, - I've seen this room and I've

*mf*

Ba - by, I've been here be - fore, - I've seen this room and I've

*mf*

Ba - by, I've been here be - fore, - I've seen this room and I've

walked this floor, - I used to live a - lone - be - fore I knew you. - I've

walked this floor, - I used to live a - lone - be - fore I knew you. - I've

walked this floor, - I used to live a - lone - be - fore I knew you. - I've

walked this floor, - I used to live a - lone - be - fore I knew you. - I've

65

*cresc.*

seen your flag on the mar-ble arch, love is not a vic-t'ry march, it's a cold and it's a

*cresc.*

seen your flag on the mar-ble arch, love is not a vic-t'ry march, it's a cold and it's a

*cresc.*

8 seen your flag on the mar-ble arch, love is not a vic-t'ry march, it's a cold and it's a

*cresc.*

seen your flag on the mar-ble arch, love is not a vic-t'ry march, it's a cold and it's a

*cresc.*

70

*dim.* *mf*

bro - ken Hal-le - lu - jah. Hal - le - lu - jah, Hal - le -

*dim.* *mf*

bro - ken Hal-le - lu - jah. Hal - le - lu - jah, Hal - le -

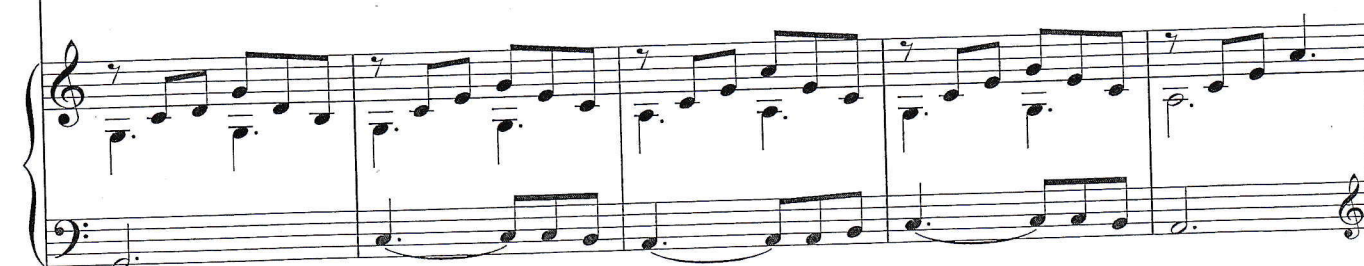
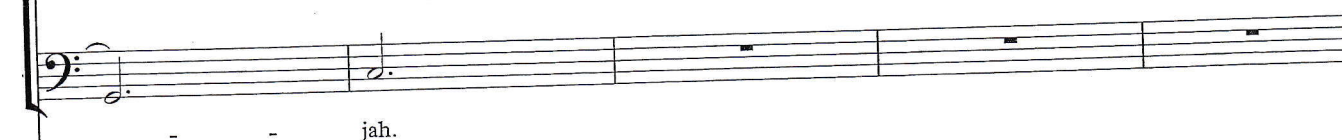
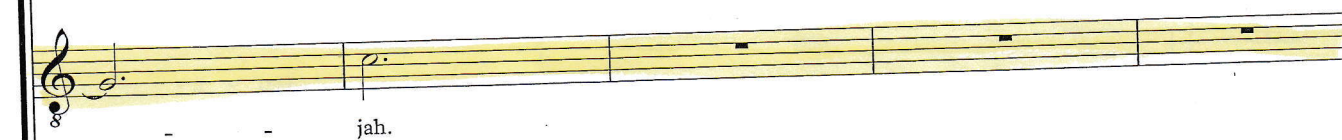
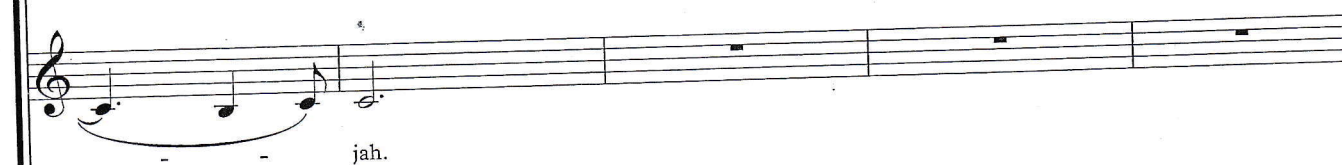
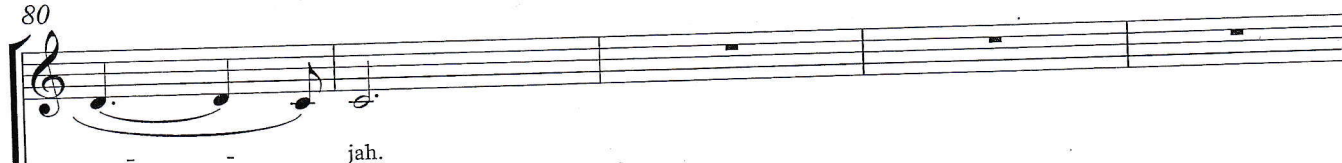
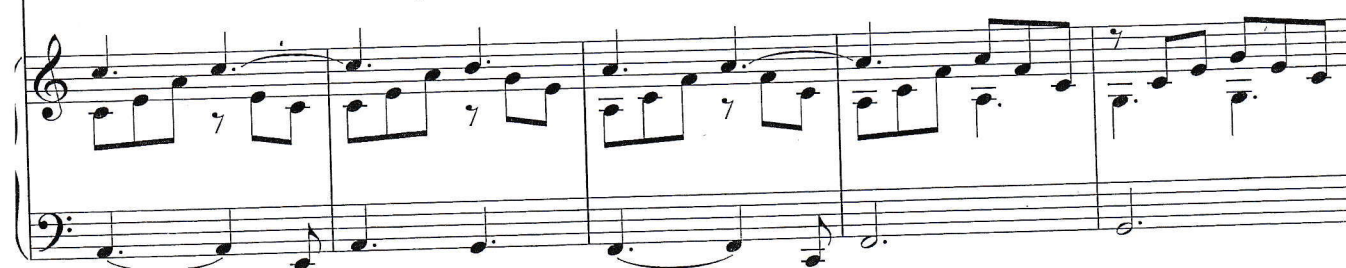
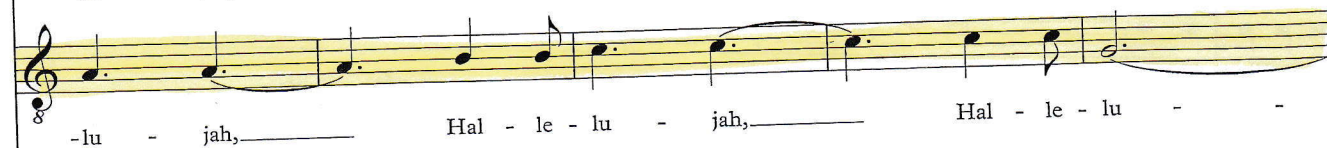
*dim.* *mf*

8 bro - ken Hal-le - lu - jah. Hal - le - lu - jah, Hal - le -

*dim.* *mf*

bro - ken Hal-le - lu - jah. Hal - le - lu - jah, Hal - le -

*cresc.* *mf*



85 *p*

Ooh, \_\_\_\_\_ ooh, \_\_\_\_\_ ooh. \_\_\_\_\_

*p*

Ooh, \_\_\_\_\_ ooh, \_\_\_\_\_ ooh. \_\_\_\_\_

*p*

May - be there's a god a - bove, - but all I e - ver learnt from love. - was how to shoot some

*p*

90 *f*

It's not a cry that you hear at night, - it's

*f*

It's not a cry that you hear at night, - it's

*f*

-bo - dy - who out - drew you. - It's not a cry that you hear at night, - it's

*f*

It's not a cry that you hear at night, - it's

not some-bo-dy who's seen the light,— it's a cold and it's a bro - ken— Hal-le - lu - jah.——

not some-bo-dy who's seen the light,— it's a cold and it's a bro - ken— Hal-le - lu - jah.——

not some-bo-dy who's seen the light,— it's a cold and it's a bro - ken— Hal-le - lu - jah.——

not some-bo-dy who's seen the light,— it's a cold and it's a bro - ken— Hal-le - lu - jah.——

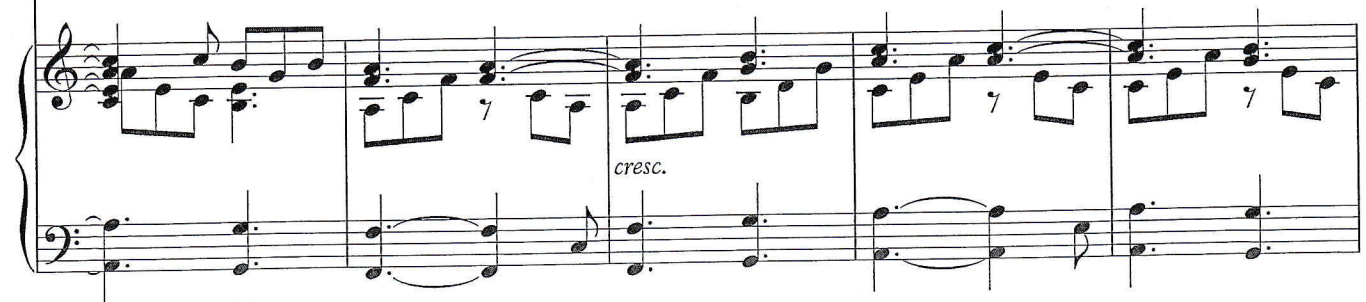


Hal - le - lu - jah, Hal - le - lu - jah, Hal - le -

Hal - le - lu - jah, Hal - le - lu - jah, Hal - le -

Hal - le - lu - jah, Hal - le - lu - jah, Hal - le -

Hal - le - lu - jah, Hal - le - lu - jah, Hal - le -



105

Four vocal staves and a piano accompaniment. The vocal parts are in treble and bass clefs. The piano part is in treble and bass clefs. The lyrics are: - lu - jah, Hal - le - lu - jah, Hal-le-  
- lu - jah, Hal - le - lu - jah, Hal-le-  
- lu - jah, Hal - le - lu - jah, Hal-le-  
- lu - jah, Hal - le - lu - jah, Hal-le-  
The piano accompaniment features a steady eighth-note pattern in the right hand and a simple bass line in the left hand.

110

Four vocal staves and a piano accompaniment. The vocal parts are in treble and bass clefs. The piano part is in treble and bass clefs. The lyrics are: - lu - jah, Hal-le - lu - jah, Hal - le - lu - jah, Hal - le-  
- lu - jah, Hal-le - lu - jah, Hal - le - lu - jah, Hal - le-  
- lu - jah, Hal-le - lu - jah, Hal - le - lu - jah, Hal - le-  
- lu - jah, Hal-le - lu - jah, Hal - le - lu - jah, Hal - le-  
The piano accompaniment features a steady eighth-note pattern in the right hand and a simple bass line in the left hand. The dynamic marking *mp* (mezzo-piano) is indicated above the piano part in measures 110, 111, 112, and 113.

*dim.**p*

- lu - - - jah. \_\_\_\_\_

*dim.**p*

- lu - - - jah. \_\_\_\_\_

*dim.**p*

- lu - - - jah. \_\_\_\_\_

*dim.**p*

- lu - - - jah. \_\_\_\_\_

*dim.* *p*

*dim.**pp*

Hal - le - lu - jah, \_\_\_\_\_ Hal - le - lu - - - jah.

*dim.**pp*

Hal - le - lu - jah, \_\_\_\_\_ Hal - le - lu - - - jah.

*dim.**pp*

Hal - le - lu - jah, \_\_\_\_\_ Hal - le - lu - - - jah.

*dim.**pp*

Hal - le - lu - jah, \_\_\_\_\_ Hal - le - lu - - - jah.

*dim.* *pp*